

Republic of the Marshall Islands



Accomplishments

Challenges

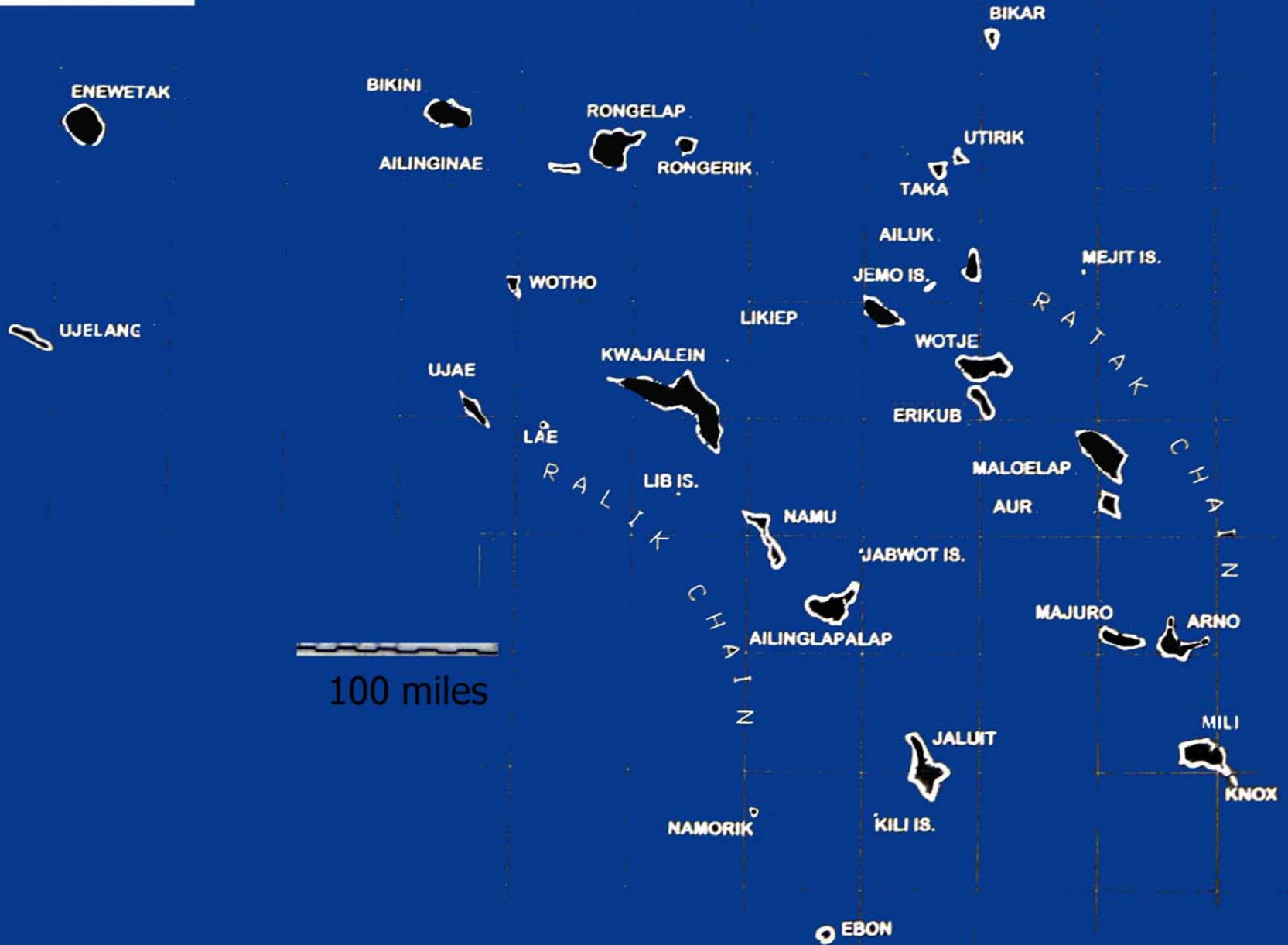
Needs

RMI: 2 chains of atolls in the middle of the Pacific





REPUBLIC OF THE MARSHALL ISLANDS





low lying islands

-70 sq. miles of land

- over 700,000 sq. miles of water

Accomplishments

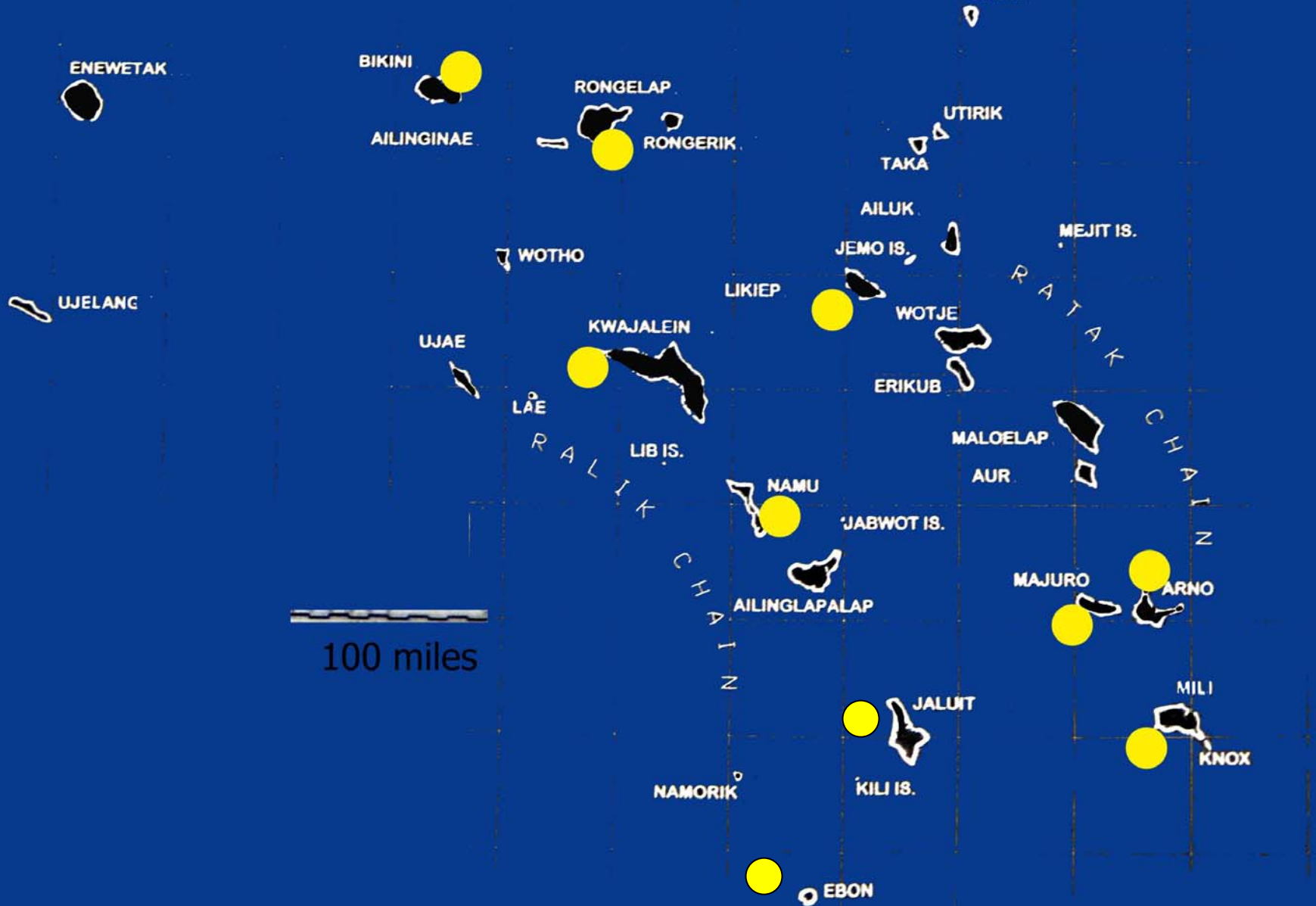




Formation of the Coastal Management Advisory Council (CMAC)

An inter-governmental, non-governmental group
led by the Marshall Islands Marines Resources Authority

Survey Expeditions 2002-2005



NRAS: 2004 Namu Expedition





College of the Marshall Islands Marine Science Program

Education

Research

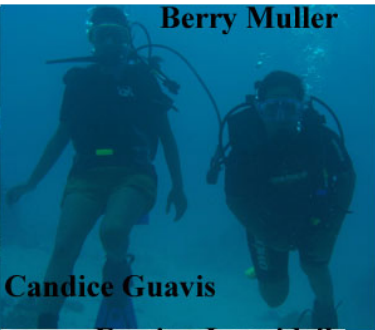
Conservation

Outreach/demonstrations

Capacity building



Harry Langrine



Berry Muller

Candice Guavis



Barris Ritok




Emrina Langidrik



Anna McMurray



Melba White

An underwater photograph showing several divers in a coral reef environment. One diver in the foreground is wearing a blue wetsuit and yellow fins, holding a clipboard. Other divers are visible in the background, some with their heads and masks above water. The water is clear and blue, and the coral reef is visible on the bottom.

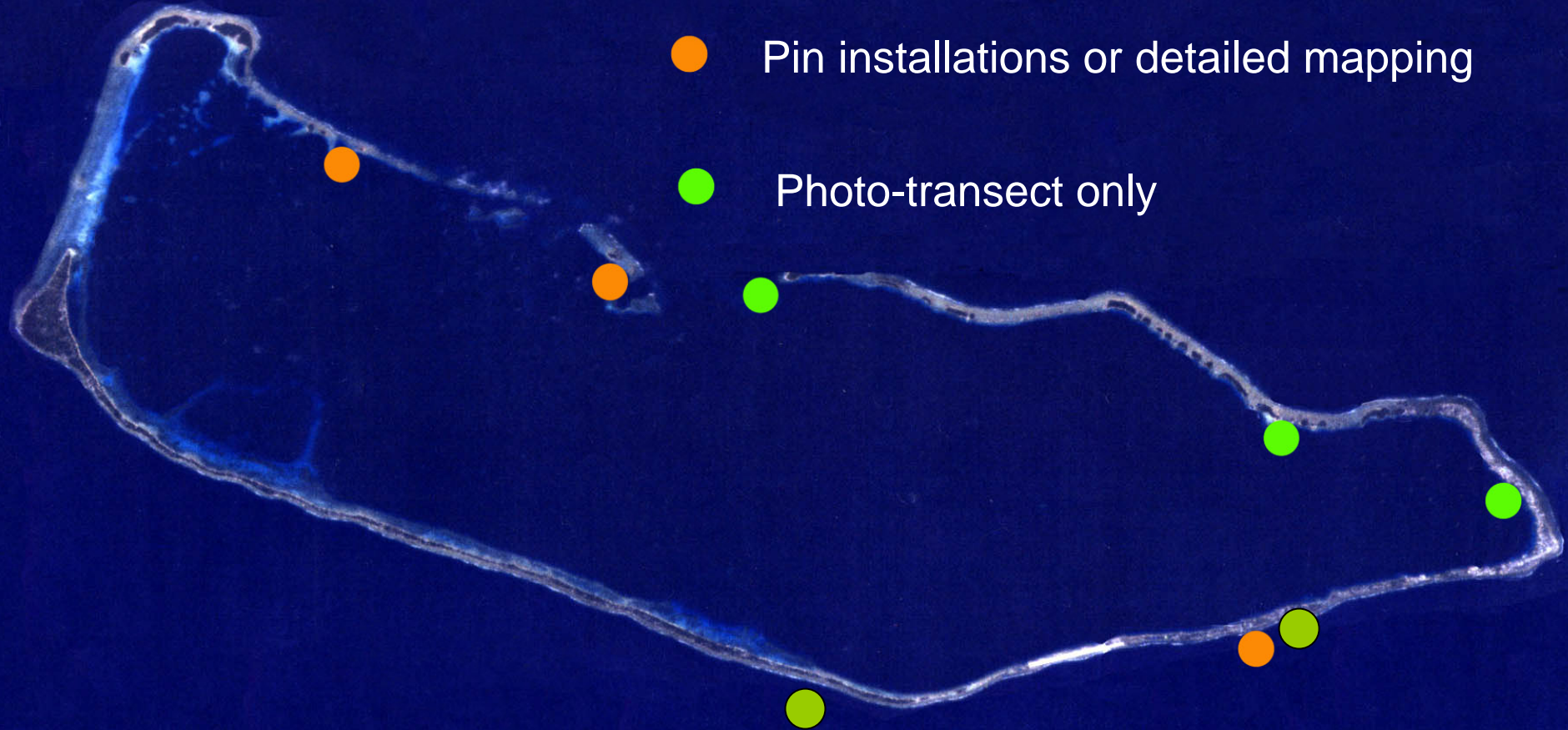
This program emphasizes practical, hands-on skills, both on/in the water and in the classroom, and also provides an academic background essential for marine scientific support for coastal management.

- Coral Reef Ecology
- Coral Reef Threats
- PADI Open Water Scuba Diving
- Boat and Diving Operations
- Marine Instrumentation
- Survey Techniques
- Data Analysis and Presentation
- MPAs and Management
- Mariculture

Long term reef monitoring sites

● Pin installations or detailed mapping

● Photo-transect only



PLACING OF PERMANENT TRANSECTS



An underwater photograph showing three divers exploring a coral reef. The divers are equipped with scuba tanks, masks, and fins. The water is clear and blue, and the coral reef is vibrant and diverse. The text is overlaid on the image in a white, serif font.

The formulation of a community-based fisheries management plans based on the needs of each local community in the Republic of the Marshall Islands.



COMMUNITY WORKSHOPS



Arno Atoll - Endorsement of Fisheries

Management Plan and MPAs

Likiep Atoll – Endorsement of Fisheries

Management Plan

Mejatto Islands - Endorsement of

Fisheries Management

Majuro Atoll - In process



Jaluit Atoll Conservation Area



Zones & Activities

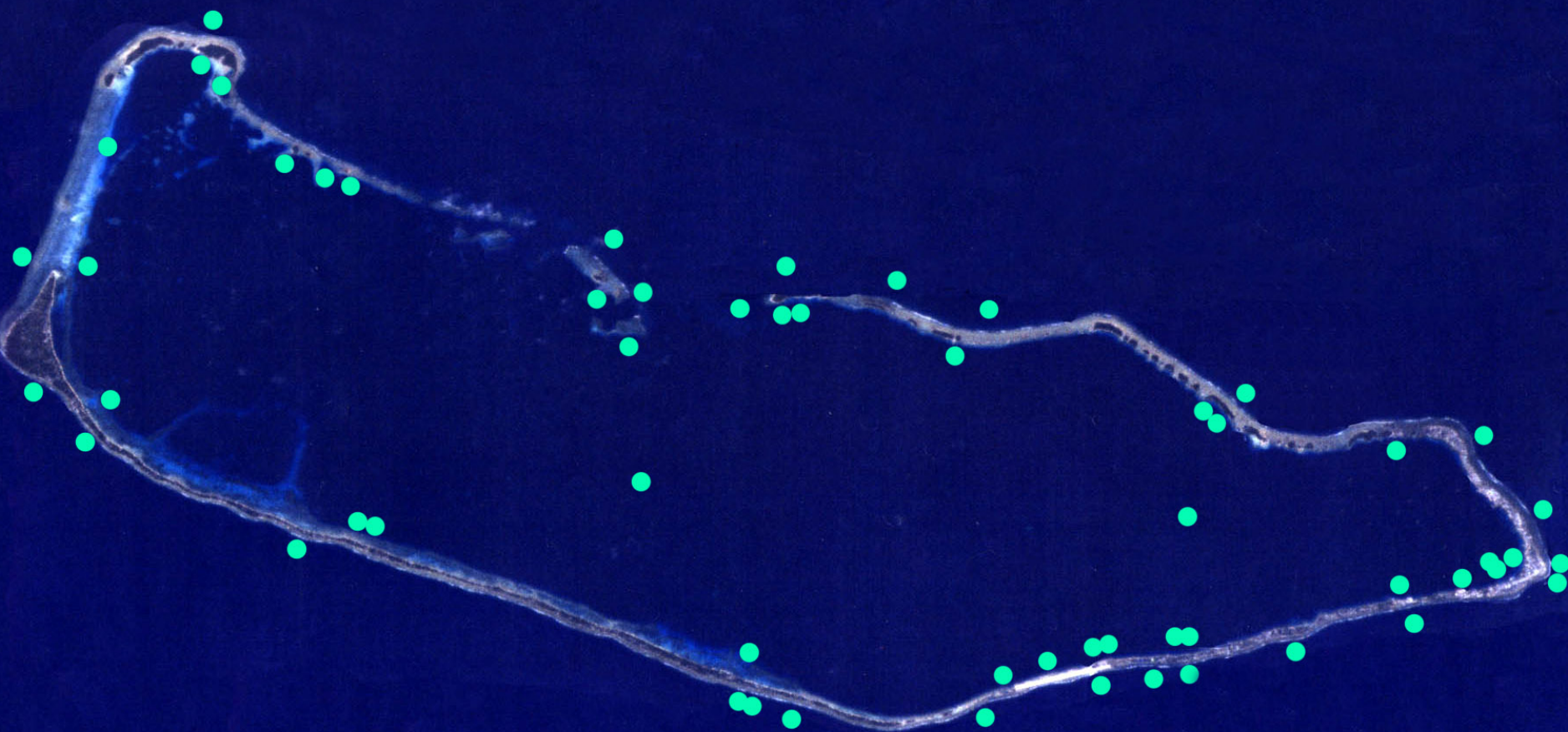
General Use: subsistence, commercial harvesting, Send off island harvesting, eco-tourism.

Kakijen: Subsistence, eco-tourism activities and special traditional occasion.

Mo: Only eco-tourism activities and special authority from traditional leaders.

Atoll Wide Ban: For certain marine species identified in last survey to be in critical number.

Photo-documented dive sites 2001-2005



MARICULTURE

- CLAMS
- PEARL OYSTERS
- CORALS
- MARINE ORNAMENTALS

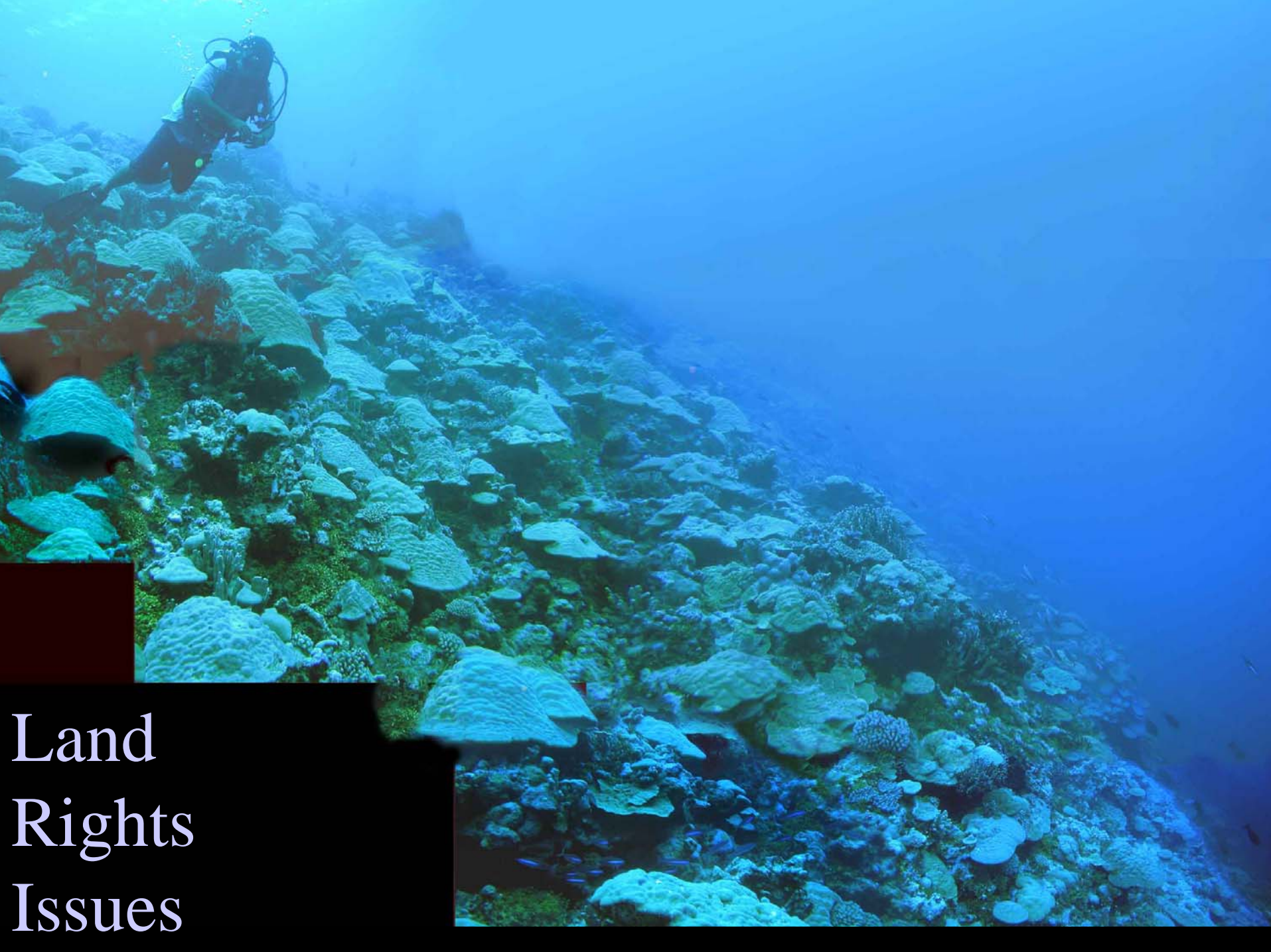


Challenges

INDUSTRIAL FISHING

tuna fishing





Land
Rights
Issues

enforcement against illegal foreign fishing fleets



● Survey Sites

🪝 Fishing Evidence

Environmental\Sustainable Development Issues:

- overpopulation
- garbage disposal
- ballast waters
- dredging
- erosion
- ship grounding
- illegal, unreported and unregulated (IUU) Fishing



SOCIO – ECONOMIC ISSUES:

- Cultural Values
- Food Security
- Economic Growth





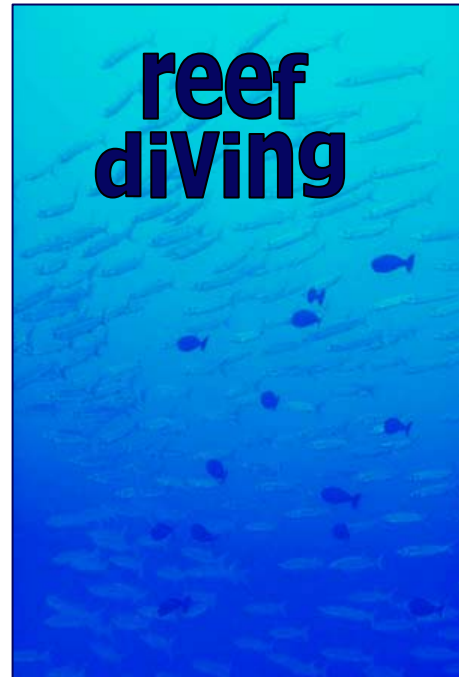
TOURISM



Wreck
diving



Sport
fishing

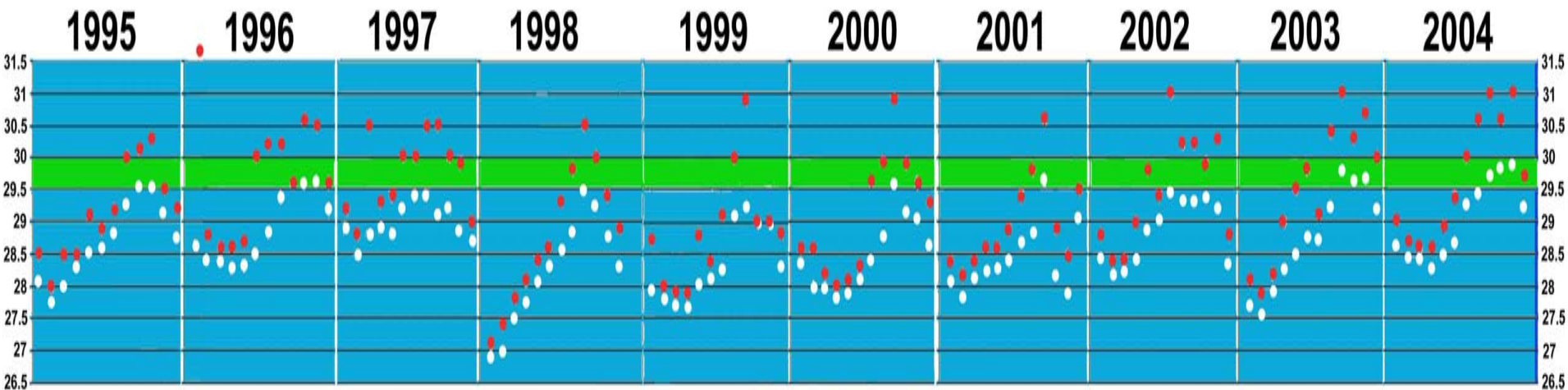


reef
diving

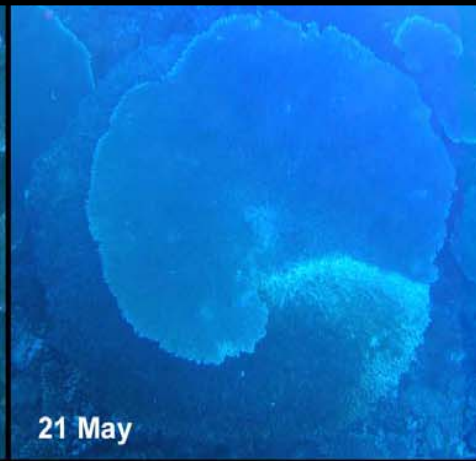
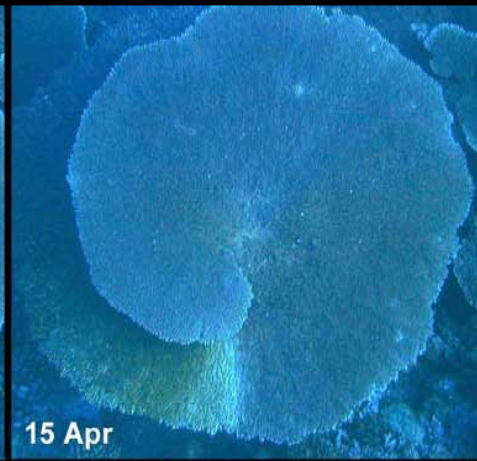
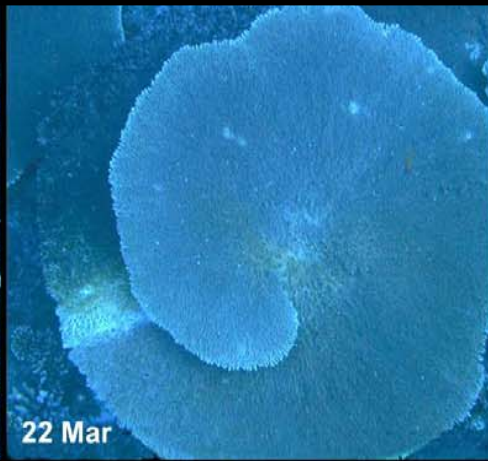
CLIMATE CHANGE

ISSUES

Majuro lagoon sea temperature (monthly mean and max)



CORAL DISEASE



Coral Bleaching



A photograph of a crown of thorns cactus (Mylodacneme aculeata) growing on a sandy surface. The cactus is a dense, rounded cluster of dark green, segmented stems, each covered in numerous sharp, dark spines. The background is a light-colored, sandy ground with some small, dark pebbles scattered around. The overall lighting is bright, creating a high-contrast scene.

CROWN OF THORNS

Plans for the Future and Future Needs



A large school of fish, likely a species of surgeonfish, is swimming in clear blue water above a coral reef. The fish are densely packed and moving in a coordinated pattern. The coral reef is visible in the lower portion of the image, showing various types of coral structures.

Fishery Management Plans for each atoll



Conservation

Recommendations for MPAs
based on ecology,
biodiversity
and larval dispersal results

conservation for tourism

A scuba diver is swimming horizontally in clear blue water, positioned above a large, healthy coral reef. The diver is wearing a blue wetsuit, a scuba tank, and fins. The reef below is covered in various types of coral, including large, flat, table-like corals. Sunlight filters down from the surface, creating a bright, clear environment.

**High tourism potential for
photographers and nature lovers:
new income generation activities:
nature guides, interpreters, park
rangers**

Self-financed parks:

- Tourist entrance fees for snorkelers, divers, and yachts
- Researchers at Marine Stations
- Income from aquaculture associated to MPAs

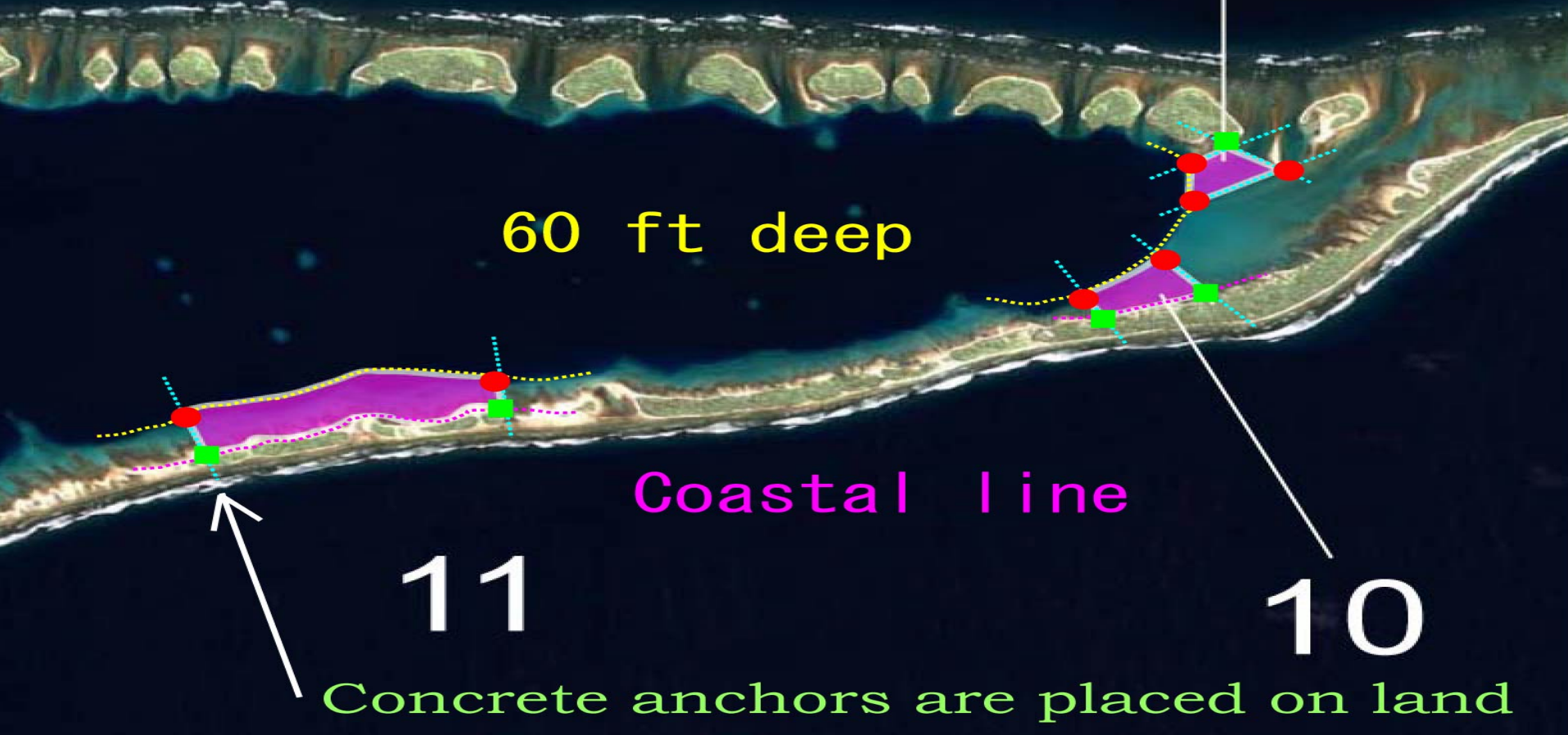
conservation for preservation of sites of exceptional beauty and extremely high biodiversity

**Pristine reefs,
High variety of
habitats,
Abundant fish
populations,
Large predatory
fish,
Giant clams,
Very high
diversity,
New species and
range extensions**



Network of MPAs:

More education, capacity building,
community based monitoring and
assistance to Government



Highest Needs



FINANCIAL HELP:

- training
- surveys and monitoring
- enforcement
- public awareness

TECHNICAL SUPPORT FOR:

- pollution control
- strengthening of agencies
- enforcement
- remote sensors/video cameras
- legal assistance
- patrol boats

A split-view image showing a tropical island with palm trees and a white beach above the water, and a vibrant, colorful coral reef underwater below. Sunlight rays penetrate the clear blue water, illuminating the diverse coral structures. The text 'Kommol tata!' is overlaid in the center of the underwater scene.

Kommol tata!